

# IW-FIRT 2012 Excursion

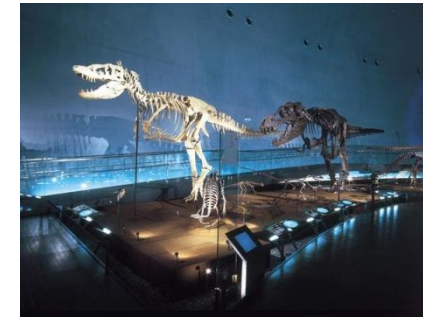
March 9, 2012

## Schedule:

- 12:30 Meeting place: the 1<sup>st</sup> floor of the FIR Center
- 12:35 Depart from University of Fukui  
↓
- 13:00 – 14:00 Lunch ( Japanese-style lunch)  
(1 hour) ↓
- 14:40 – 16:00 Dinosaur Museum  
(80 min) ↓
- 17:00 Arrive at JR Fukui station and Hotel Fujita Fukui  
↓  
Arrive at the FIR Center, end of tour

## Fukui Prefectural Dinosaur Museum

This museum is the largest dinosaur museum in Japan and is listed as one of the world's top three dinosaur museums. Located in Katsuyama city, it is well known as a treasure house of dinosaur fossils in Japan. More than 30 dinosaur skeletons are located in open areas in the museum in addition to hundreds of other specimens. Huge dioramas depicting different prehistoric periods will further enhance your dinosaur experience.



※The schedule is subject to change depending on traffic conditions.